



Information Provided By

O&M Manager: Luis Melchor
 Operations Supervisor: Greg Dunn
 Maintenance Supervisor: Andrew Klein
 Administration Services Technician: Rachel Pearlman

**Operations and Maintenance Report
 January 2023**

Operations Department

Wastewater Treatment Division

Influent Totals	
Total	6.96
Average	0.22
High	0.42
Low	0.12

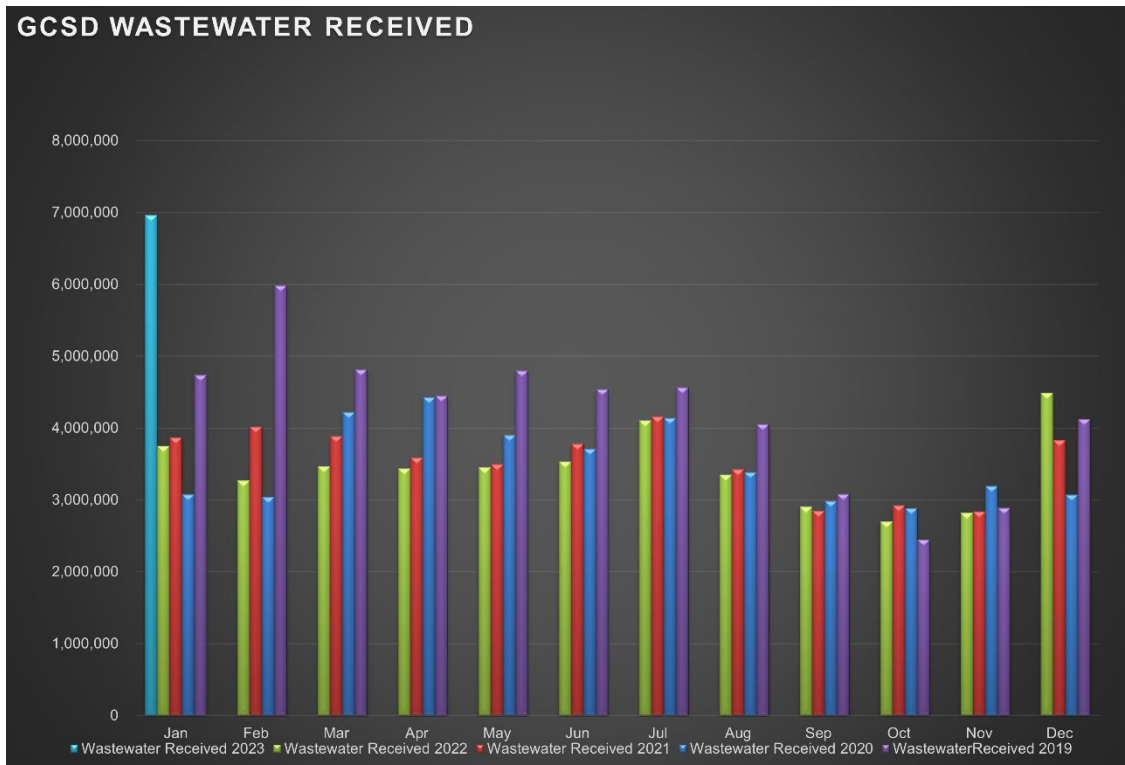
Effluent Totals	
Total	7.53
Average	0.24
High	0.46
Low	0.13

Reclamation Totals	
PML	
Spray Fields	
PML Season Total	
Spray Field Season Total	

Wasting Totals	
Total Inches	109
Total Pounds	2530
Active Accounts	1565

STP Rainfall Totals by Year During Current Month (Inches)					
Season	2023	2022	2021	2020	2019
	44.22	20.45	0.00	9.36	8.12
	High 3.01	High 0.00	High 3.86	High 1.95	High 2.71

Charted Historical Monthly Influent Totals



Wastewater Treatment Division

Routine Tasks

- Took weekly Bac-Ts and BOD of the Chlorine Contact Chamber (CCC) and sent into Alpha Lab for testing
- Completed monthly Wastewater Report and sent to the State Water Resources Control Board
- Completed daily rounds and Lab

Water Treatment Division

Routine Tasks

- Submitted monthly Water Treatment Report to State Water Resources Control Board
- Submitted monthly Conservation Report to State Water Boards
- Performed weekly checks and calibrations on all analyzers at 2G, BC, and AWS
- Performed monthly UV calibrations at 2G and BC
- Took weekly Treatment Plant samples and sent them into Alpha Lab
- Monitored/sampled Distribution Tanks as needed

Maintenance Department

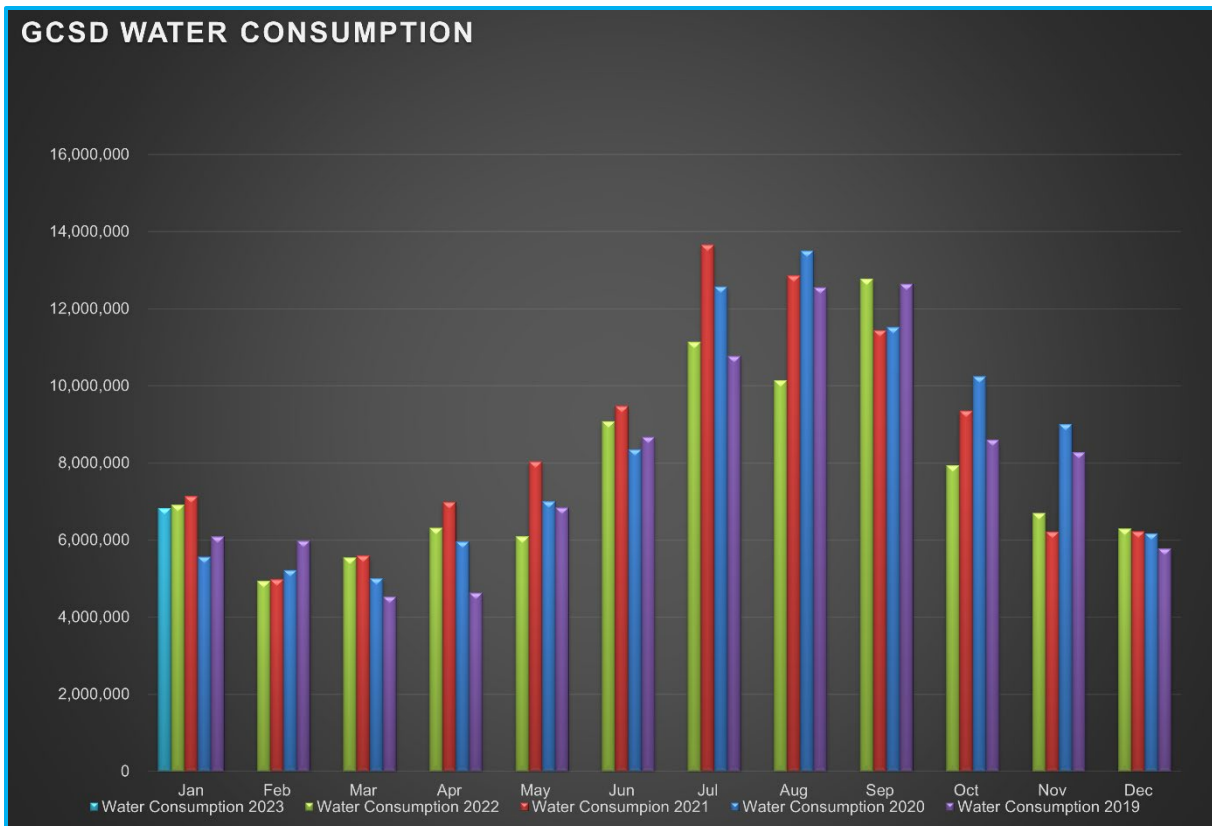
Water Distribution System Division

Meter Related Services	Total
Check / Repair Meters	11
Water Meters Installed	0
Monthly Meter Restrictions	0
Meter Lock offs	15
Meter Changeouts	1
Tenant Final Reads	2
Re-Reads	59
Meter Turn-Offs	3
Meter Turn-Ons	10
Meter Tests	77
Winterize Meter	0
Total Meter Related Issues	178

Billed Consumption (Gallons)	2023	2022	2021
Residential	6,827,350	6,909,383	7,138,130
Commercial	418,527	363,173	N/A
Total	6,408,823	6,546,210	7,138,130

Active Accounts	3263
------------------------	------

Charted Historical Monthly Water Consumption



Maintenance and Repair Data

Description	Total
Water Main Leaks / Repairs	0
Water Service Line Leaks / Repairs	1
Fire Hydrant Repairs / Replacements	0
Number of Hydrants Flushed	7
Number of Dead-Ends Flushed	5
Water Valves Exercised	4
GIS Points	0

Description	Gallons
Flushing for Water Quality	5,100
Water Loss Due to Leaks / Breaks	9,884

After-Hours Calls (Hours)				
Water	Sewer	Park	Other	Total
6	7	2	1	16

Maintenance and Repair

- **Routine Tasks**

- Read all District Water Meters
- Customer Service Calls (Low / High Pressures, No Water, Turn-Ons / Turn-Offs, Etc.)
- Underground Service Alert (USA) Utility Marking Program
- Weekly Pump Station Inspections at Tank 2, Tank 4, Tank 5 (Buildings, Tanks, Motors, Pumps, Drives, Communications, Generators, and Auxiliary Equipment)
- Lock offs for non-payment.

- **Tanks and Pump Stations**

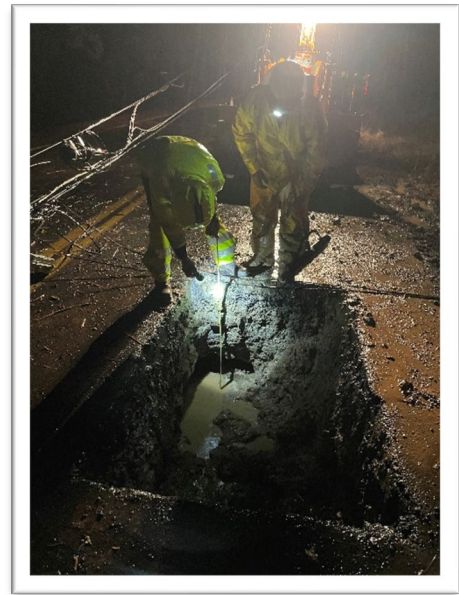
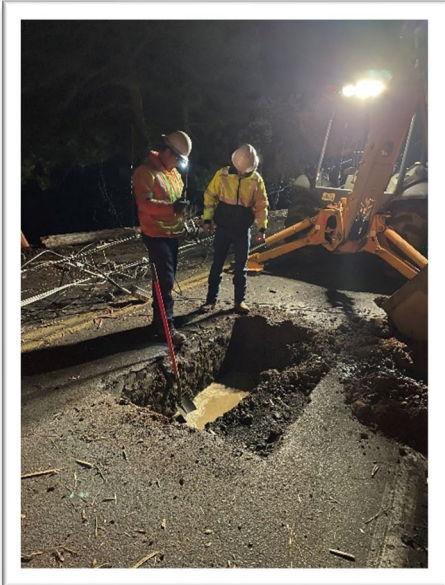
- Inspect and exercise generator at Tank 2
- Inspect and exercise generator at Tank 4
- Inspect and exercise generator at Big Creek TP
- Inspect and exercise generator at 2G TP

- **Distribution System**

- Water leak, 12965 Mueller Dr – Storm Damage and caused by subsequent work by PG&E.
- Zero Read meter testing.
- Water leak investigation. Crews spent 6 hours trying to locate a “Very Large” water leak. Turned out to be a property side leak at Twin Pines Apartment Complex. Total Loss was nearly 490,000 gallons.

Pictures

Water Break – Mueller Dr



Wastewater Collection System Division

Description	Total
Manholes Inspected	125
GIS Points	0
Customer Complaint	2
Odor Complaints	0

Description	Total
Flushing/Jetting (Feet)	1500
Video Inspection (Feet)	0

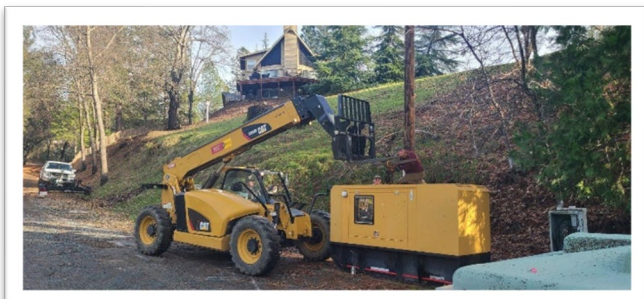
Description	Total
Sanitary Sewer Spills (SSO)	0
SSO Gallons Spilled	0

Maintenance and Repair

- **Routine Tasks**
 - Weekly lift station site inspections (PMCS)
 - Added degreaser and odor control to lift stations
- **Lift Stations**
 - Cleaned: LS1, LS3, LS4
 - Lift Station 8 – Over crank alarms on generator. (Part of CIP replacement, work in progress)
 - Lift Station 12 – Replace low float. “Low Low” alarms were not accurate.
 - Lift Station 7 – Replace Allen-Bradley display.
 - Lift Station 15 – Diagnose and repair transfer switch.
 - Lift Station 5 and Lift Station 8 - Diagnose pumps/flow meters. Found flow meters to be inaccurate.
- **Collection System**
 - Flushed/Jetted gravity sewer line areas.
 - Groveland, Bass Pond, Twin Pines Easement Manhole inspections.
 - Removed downed trees from Twin Pines Easement

Pictures

Lift Station 13 Generator Replacement



Parks Division

Maintenance and Repair

- **Mary Laveroni Community Park**
 - Landscape Maintenance
 - Annual Fall Leave/Slash removal
 - Daily trash and bathroom maintenance
- **Ballfield & Dog Park**
 - Annual dog park gate code change.

Deer Flat Parcel



General Maintenance Division

Maintenance By Department

- **Operations Department**
 - 2G Water Treatment Plant
 - Big Creek Water Treatment Plant
 - AWS
 - STP
 - Repair sludge pump at WWTP.
- **Maintenance Department**

- Equipment
 - Monthly Inspect and run at operating temperatures...
 - Rain for Rent, Sullair, Vactron, Cement mixer, Light Tower, STP generator, Dunn Ct Generator, AWS Generator, Standby Generator, Highlands Generator.
 - Diagnosed parts washer motor. Replacement motor ordered. (Warranty)
- Vehicles
 - 80012: Cleaned and replaced pump and pump check valve. R & R carburetor to clean.
 - 52229: Installed new drawers in toolbox. (Warranty)
 - 50807: Check Engine Light diagnosis. Found speed fan fault and temp fault. R & R fan.
 - 80001: Diagnose Hotsy pressure washer. Found faulty ignitor. Part ordered.
- Buildings & Yard
 - R&R light bulbs in Maintenance Office, Maintenance Shop, Operations building, and Big Creek TP.
 - Cleaned laundry equipment and reversed the door on dryer.
 - General yard cleanliness.
 - Vegetation management.

Contracted Work

- Day Generator Service
 - Generator upgrades at LS1, LS2, LS7, LS8, LS9, LS13, Highlands PS, Big Creek TP, Second Garrote TP, and Admin.
- Moyle Excavation
 - Sanitary Sewer Replacement CIP project continuing

Workplace Safety and Training

- Routine Safety Meetings
 - Daily Tailgate Meetings
 - Weekly Safety Meetings
 - Weekly Security Checks
 - Weekly Vehicle Inspection
- Vac-Con Safety Training provided by MME Equipment

Our New Equipment

Truck 31

2023 Chevrolet 3500 4WD 6.6L Duramax Diesel, Auto Transmission, Harbor Toolbox with lumber rack, crane, and work lights. This will be our primary service vehicle (carrying necessary tools and equipment) for water and wastewater repairs.

