



# MEASURE "V"

TUOLUMNE COUNTY FIRE AUTHORITY

JUNE 8, 2021 ALL MAIL ELECTION





# DISCUSSION OVERVIEW

## 1. Goal is to provide factual information about:

- The Groveland Fire Department
- Tuolumne County Fire Authority
- Ballot Measure V

## 2. Not about Advocacy

## 3. Please be respectful of those in attendance (No heckling, cheering or jeering)

## 4. We will take public questions at the end of the presentation

## 5. Contact your local fire department for more specific information

# GROVELAND FIRE DEPARTMENT



- Groveland CSD formed in 1953 to provide fire services
- Public agency with five person elected Board
- General Manager responsible for all services
- Fire Chief responsible for fire department management
  - Nick Casci – Fire Chief
  - Andy Murphy – Assistant Fire Chief

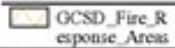
**Legend**

GCSD Boundary

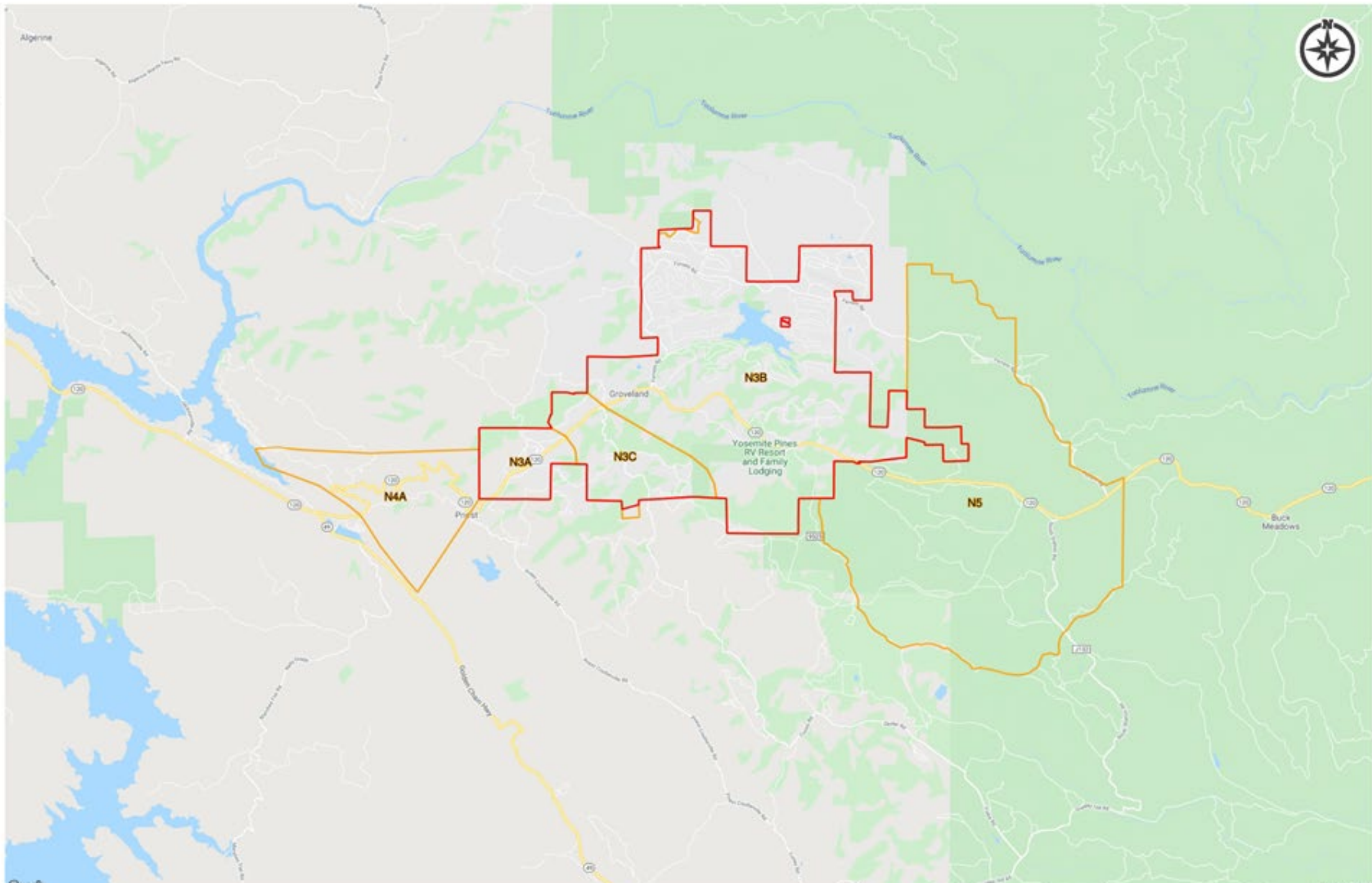


Boundary

Response Area - In District



GCSD\_Fire\_Response\_Areas



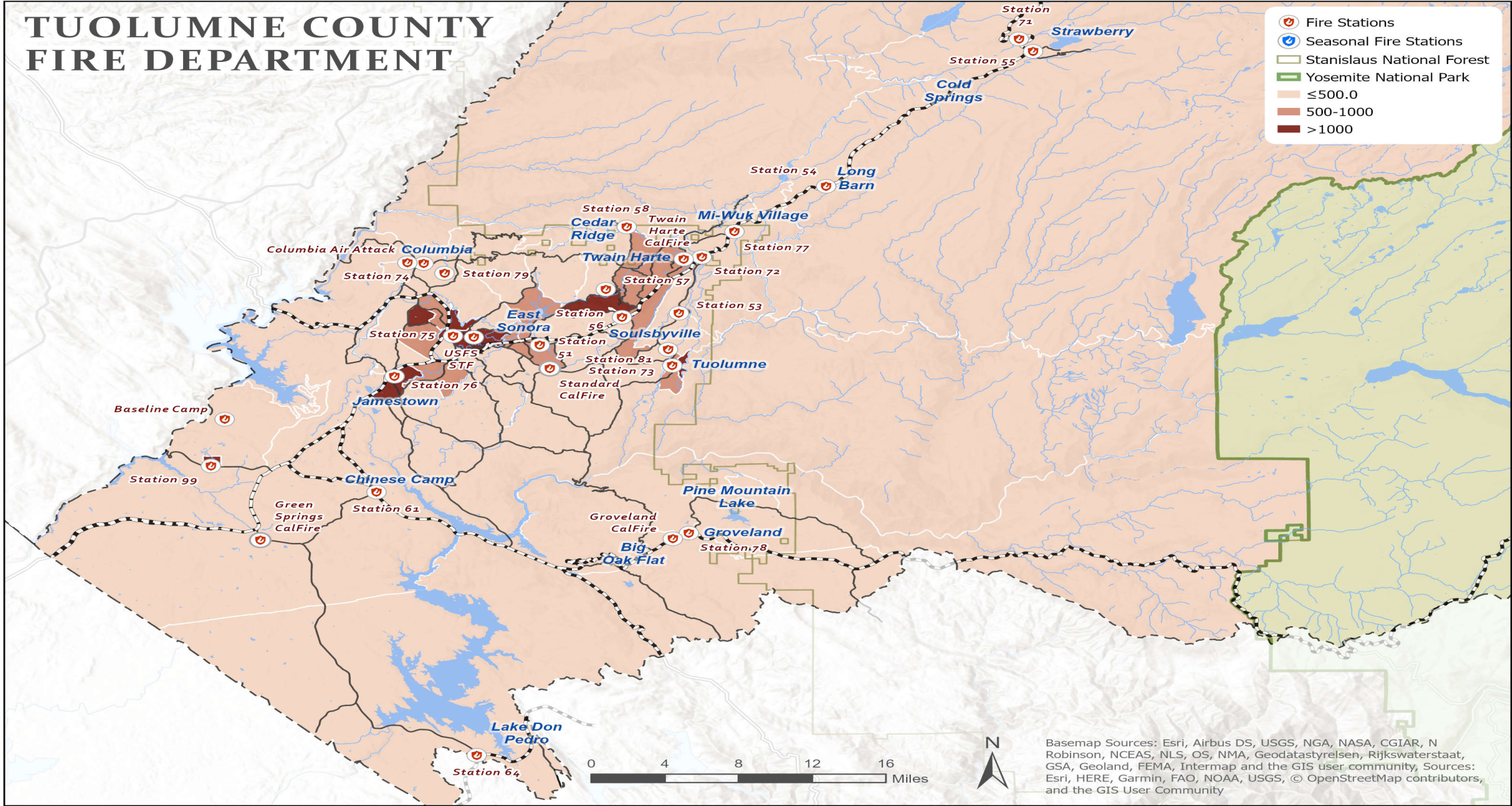




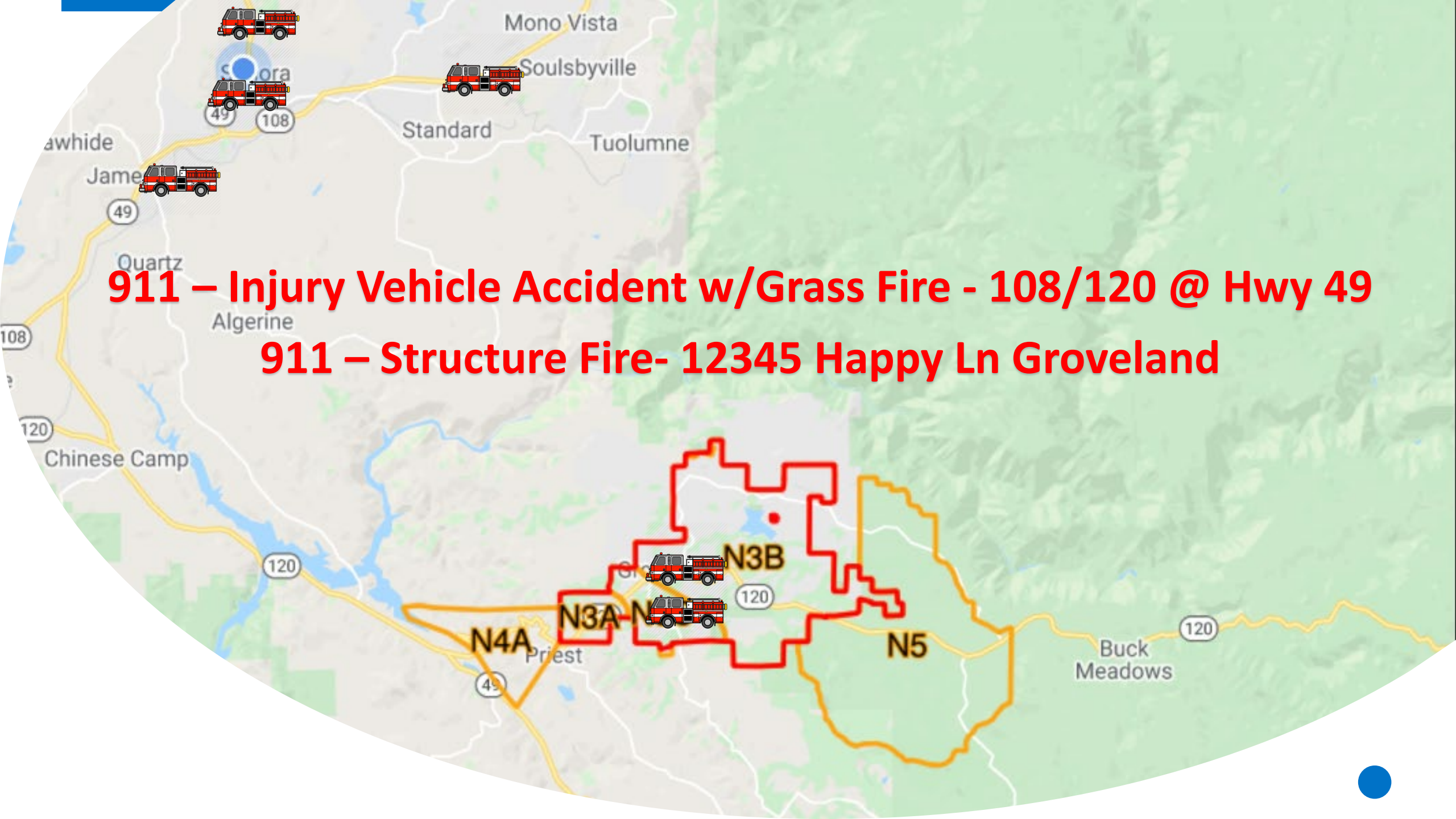
# IMPORTANCE OF MUTUAL AID



## TUOLUMNE COUNTY FIRE DEPARTMENT







**911 – Injury Vehicle Accident w/Grass Fire - 108/120 @ Hwy 49**

**911 – Structure Fire- 12345 Happy Ln Groveland**



# GROVELAND FIRE FACILITIES AND EQUIPMENT

- Station 78 Building + two remote storage buildings
- Four Fire Engines
- Utility Truck
- Breathing Air Compressor System
- Jaws of Life
- Turnouts and safety gear
- Hoses, valves, controls, pumps, saws





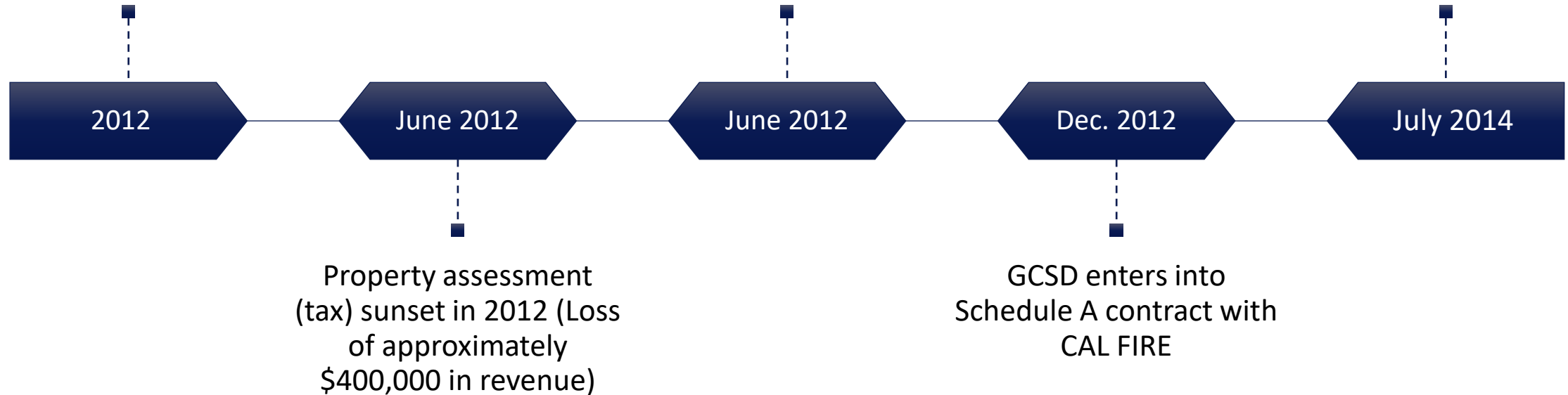
# GROVELAND/CALFIRE RELATIONSHIP



Groveland Fire Department staffed with GCSD employees prior to 2012

GCSD Places Measure D on Ballot; measure fails

GCSD Enters into "Amador" for additional staffing



# EMERGENCY RESPONSE TYPES (ALL DEPARTMENTS)

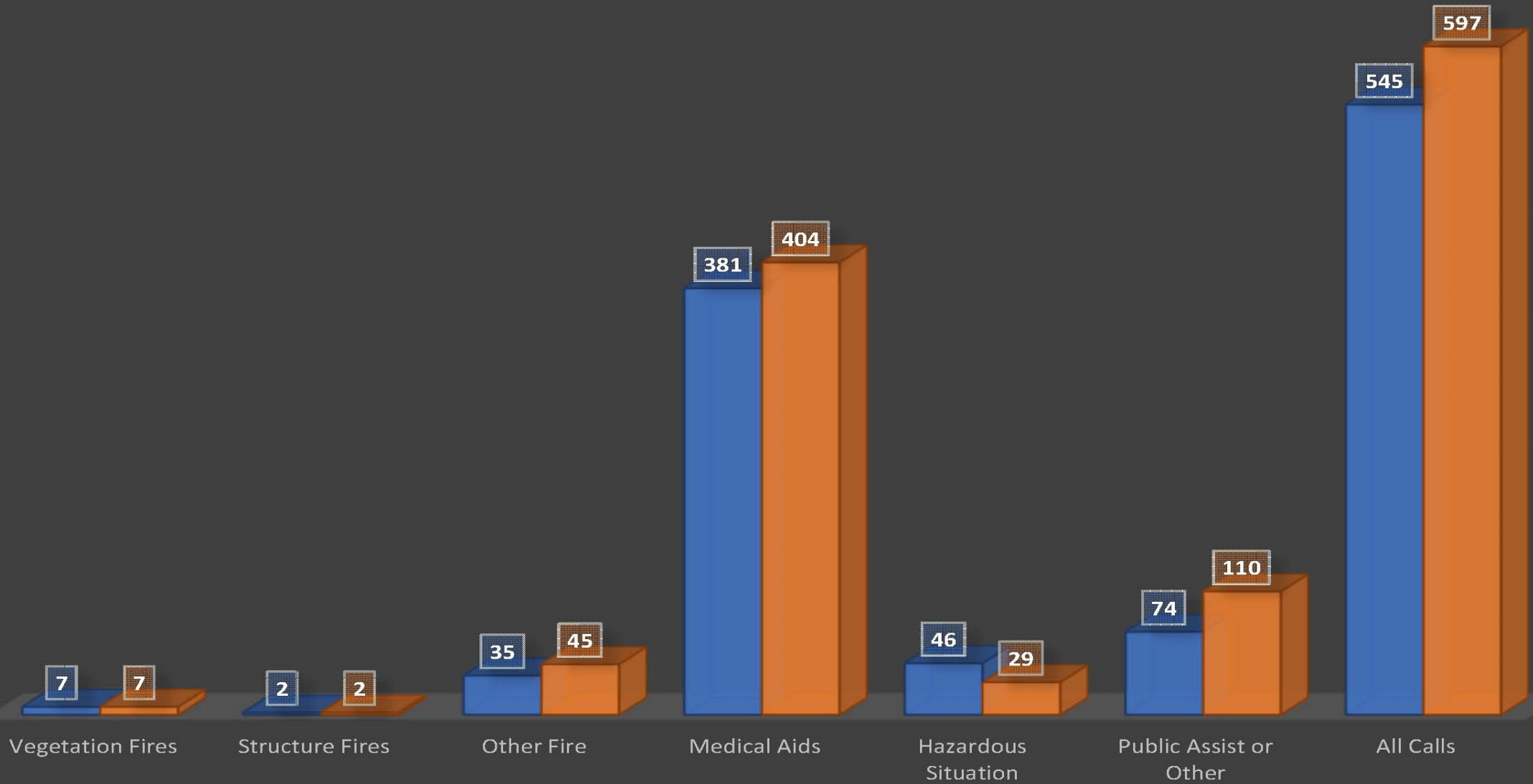
- Vegetation Fires
- Structure Fires
- Other Fires (vehicle, electrical, etc)
- Medical Aids
- Vehicle Accidents
- Hazardous Situations
- Public Assist or Other





# GROVELAND FIRE DEPARTMENT CALLS BY TYPE

■ 2019 ■ 2020



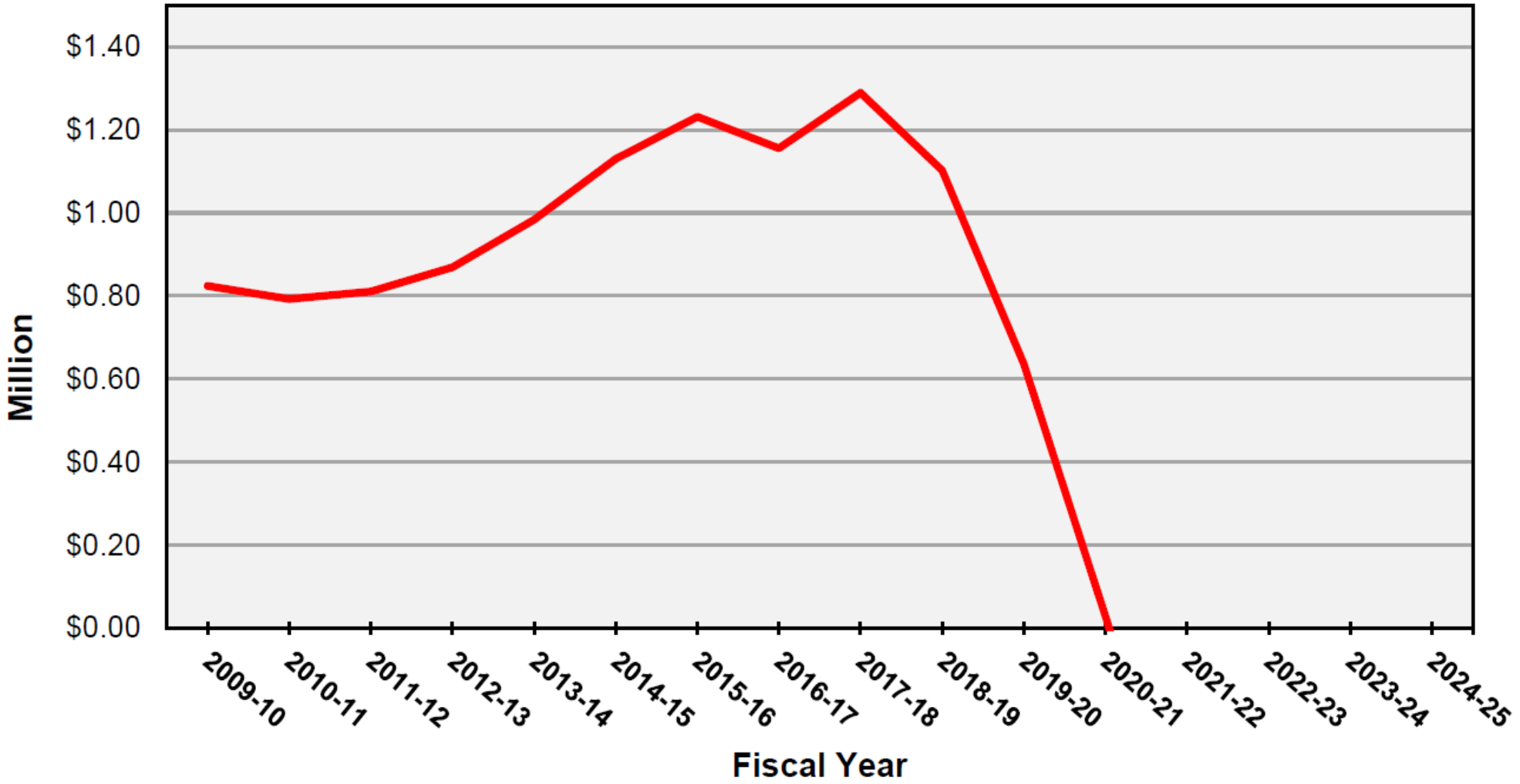
# GROVELAND FIRE DEPARTMENT FUNDING



Cost Category	Annual Change Factor	Projected Costs				
		FY 2020-21	FY 2021-22	FY 2022-23	FY 2023-24	FY 2024-25
CAL FIRE Schedule A Contract	5.00%	1,131,604	1,188,184	1,247,593	1,309,973	1,375,472
CAL FIRE Amador Plan Agreement	5.00%	0	0	0	0	0
Operations/Maintenance	5.00%	76,124	79,930	83,927	88,123	92,529
District Administration	5.00%	77,456	81,329	85,395	89,665	94,148
Fire Fund Reserve	0.00%	26,500	26,500	26,500	26,500	26,500
Capital Replacement/Renewal <sup>1</sup>		231,009	231,009	231,009	231,009	231,009
<b>Total Projected Expenditures</b>		<b>1,542,693</b>	<b>1,606,952</b>	<b>1,674,424</b>	<b>1,745,270</b>	<b>1,819,658</b>
<b>Projected Revenue</b>		<b>1,142,871</b>	<b>1,174,452</b>	<b>1,208,541</b>	<b>1,244,167</b>	<b>1,280,862</b>
<b>Gap</b>		<b>-399,822</b>	<b>-432,500</b>	<b>-465,883</b>	<b>-501,103</b>	<b>-538,796</b>



# Fire Fund Balance



# FIRE MASTER PLAN UPDATE



- Evaluated Performance to NFPA Standards
- Identified strengths, weaknesses and opportunities for improvement
- Recommendations for the future to continue to meet response standards and improve solvency



# KEY MASTER PLAN FINDINGS



- Minimum daily staffing barely sufficient to safely perform critical tasks for even small emergencies
- Current best case staffing insufficient to safely confine evolving fires and emergencies
- Fire Fund projected to be exhausted in the next two fiscal years



# POST MASTER PLAN STRATEGIC ACTIONS

- Adopted Deployment Policies to keep response times to <14:00 minutes to 90% of calls
- Adopted a goal to increase personnel to staff two engines
- Adopted Equipment Replacement Program
- Secured agreement for Tuolumne County to cover the cost of the Groveland Amador station (County Investment of \$260,000)
- Began Planning Groveland-Only Tax Measure to increase funding to sustain and improve services

# THE COST OF ENHANCING SERVICE LEVEL



Additional  
Firefighters  
(\$1.2 Million  
Annually)

Apparatus and  
Equipment  
Replacement  
(\$257,509  
Annually)

Station  
Expansion  
(\$322,500 One  
Time)

Two Engines  
Five Full Time  
Firefighters on  
Duty 24x7x365





# ON OUR OWN OR JOIN FORCES?

- Realized that GCSD Fire cannot accomplish the needed service level on its own without a much higher tax rate
- All fire departments in county rely on their neighbor department
- A financially solvent County Fire benefits all departments
  - Mutual aid
  - Dispatch
  - Training, Fire Prevention and Inspections
- Potential addition of County staffed station(s) in high call areas and Hwy 120 corridor



# IDENTIFIED COMMON ISSUES

- County Fire study in 2018 revealed most departments in financial trouble
- County Fire and other departments minimally staffed for the area covered
- County considered reducing staffing with recent budget shortfalls
- Identified that equipment replacement was top priority for most departments

# JOINING FOR A COMMON CAUSE - TCFA

- First time in history fire departments joined together due to common concerns, needs and issues
- Chose to join forces in a collaborative entity to share resources and support each other
- Created mechanism to give the voters the opportunity to decide on a funding measure for local fire departments
  - Separate, designated fund





# TCFA SPECIAL TAX PROPOSAL – MEASURE “V”

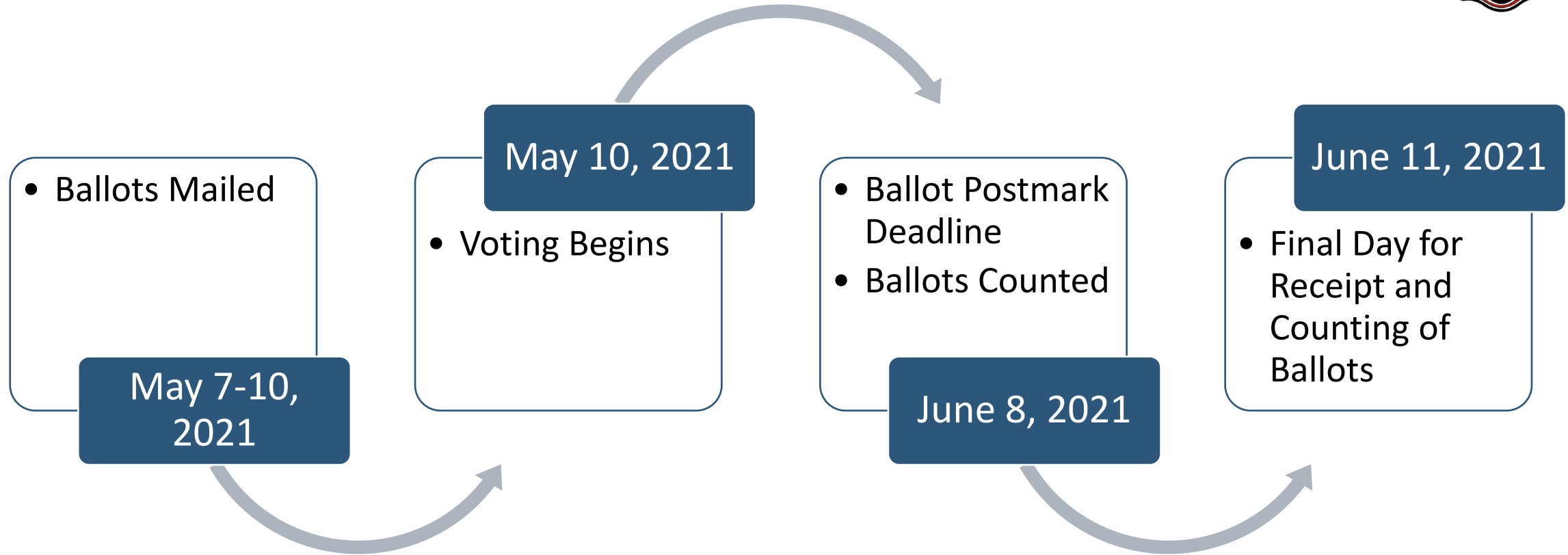


- Special Tax requiring supermajority approval
- Levied on all properties located in the TCFA
- \$150 per developed parcel, \$75 per undeveloped parcel
- If approved, will be levied in 2021/22 tax year





# MEASURE V TIMELINE



# MEASURE "V" DISTRIBUTION



<b>Entity</b>	<b>Total # of Parcels</b>	<b>Estimated Revenue</b>
City of Sonora	2261	\$313,425
Columbia Fire Protection District	217	\$28,650
County of Tuolumne	24,068	\$3,117,975
Groveland Community Services District	4087	\$552,525
Jamestown Fire Protection District	362	\$50,175
Tuolumne Fire District	897	\$121,200
<b>Total</b>	<b>31,892</b>	<b>\$4,183,950</b>



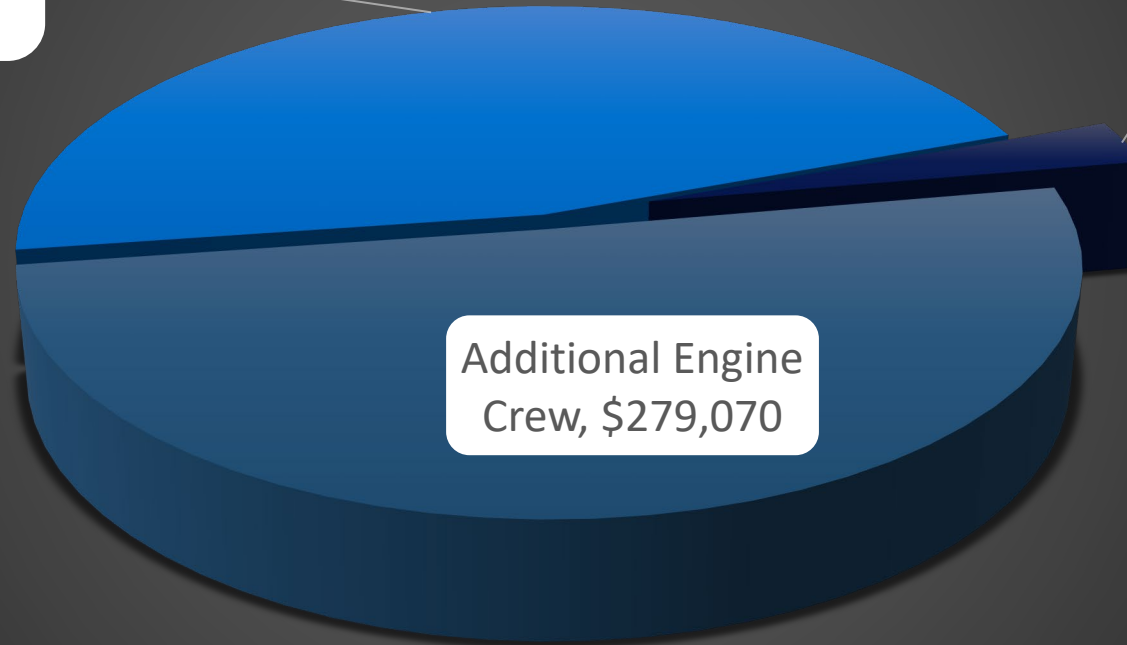
# PROPOSED (GCSD) MEASURE V SPENDING PLAN

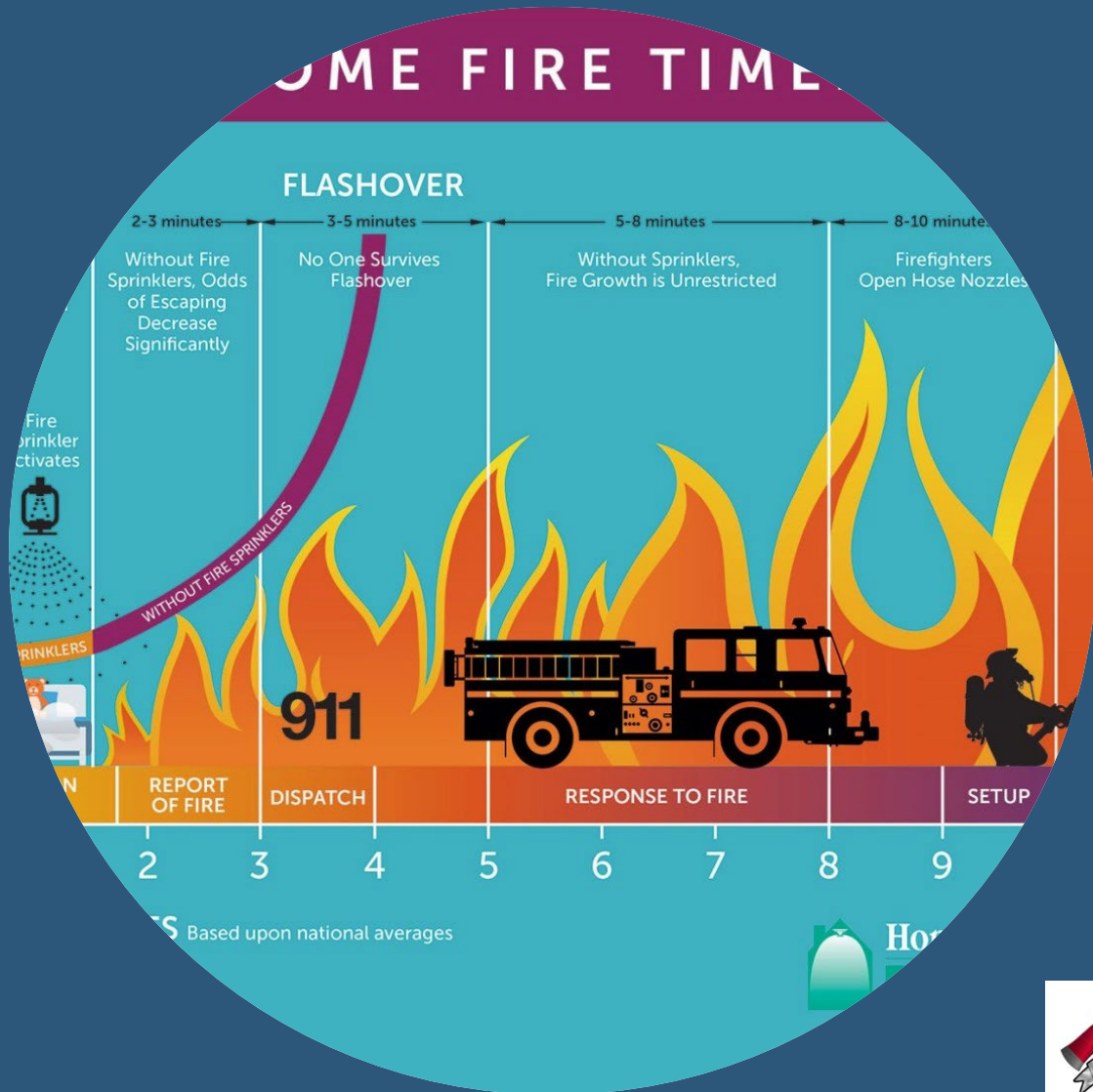


Apparatus, Equipment and  
Tool Replacements and  
Upgrades , \$257,509

Station  
Improvements,  
\$16,000

Additional Engine  
Crew, \$279,070





# RESOURCES

[WWW.GCSD.ORG](http://WWW.GCSD.ORG)

[HTTPS://WWW.TUOLUMNECOUNTY.CA.GOV/717/FIRE-DEPARTMENT](https://WWW.TUOLUMNECOUNTY.CA.GOV/717/FIRE-DEPARTMENT)





# QUESTIONS?

CONTACT:

PETER KAMPA [PKAMPA@GCSD.ORG](mailto:PKAMPA@GCSD.ORG)

ANDY MURPHY [ANDY.MURPHY@FIRE.CA.GOV](mailto:ANDY.MURPHY@FIRE.CA.GOV)

