



**Information Provided By**

O&M Manager: Luis Melchor  
 Operations Supervisor: Greg Dunn  
 Maintenance Supervisor: Andrew Klein  
 Administration Services Technician: Rachel Pearlman  
 Utility Billing Specialist: Meghan Atkins

**Operations and Maintenance Report  
 February 2024**

**Operations Department**

**Wastewater Treatment Division**

Influent Totals	
Total	4.89
Average	0.17
High	0.37
Low	0.10

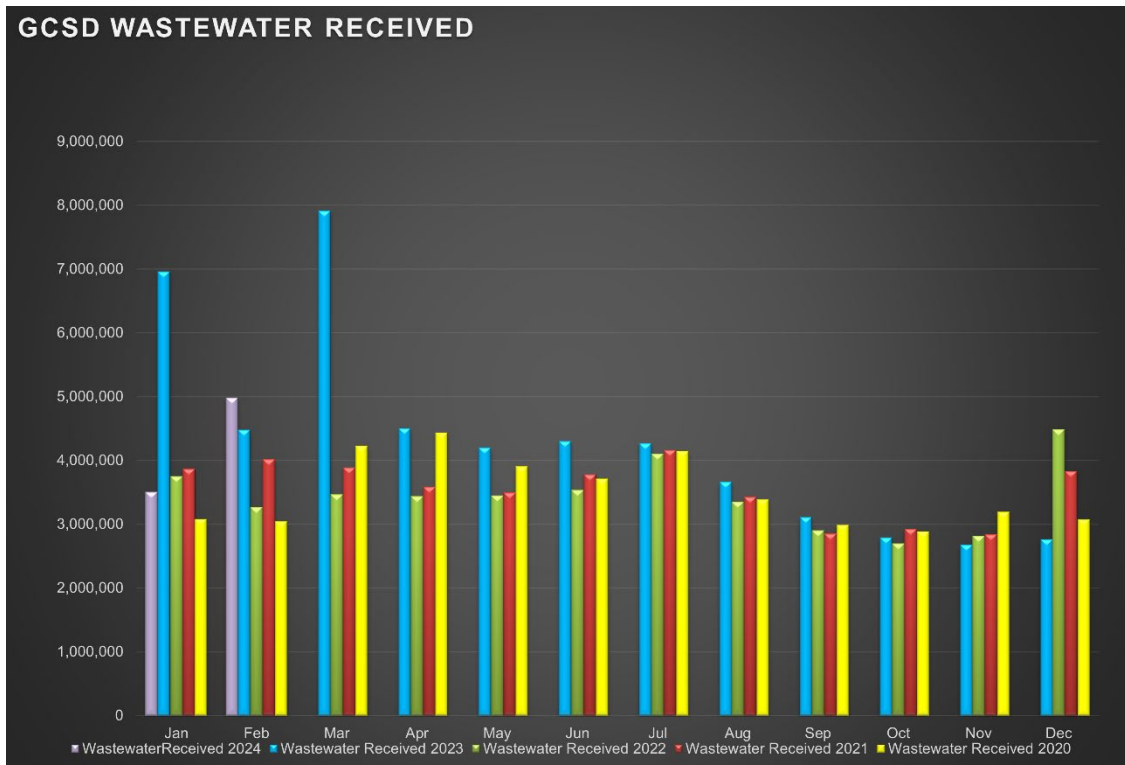
Effluent Totals	
Total	4.99
Average	0.17
High	0.38
Low	0.10

Reclamation Totals	
PML	
Spray Fields	
PML Season Total	
Spray Field Season Total	

Wasting Totals	
Total Inches	104
Total Pounds	1622
Active Accounts	1569

STP Rainfall Totals by Year During Current Month (Inches)					
Season	2024	2023	2022	2021	2020
	17.83	10.44	4.69	2.32	0.01
	High 2.36	High 1.44	High 0.55	High 0.94	High 0.01

**Charted Historical Monthly Influent Totals**



## **Wastewater Treatment Division**

### **Routine Tasks**

- Took weekly Bac-Ts and BOD of the Chlorine Contact Chamber (CCC) and sent into Alpha Lab for testing.
- Completed monthly Wastewater Report and sent to the State Water Resources Control Board
- Completed daily rounds and Lab.

## **Water Treatment Division**

### **Routine Tasks**

- Submitted monthly Water Treatment Report to State Water Resources Control Board
- Submitted monthly Conservation Report to State Water Boards
- Performed weekly checks and calibrations on all analyzers at 2G, BC, and AWS
- Performed monthly UV calibrations at 2G and BC.
- Took weekly Treatment Plant samples and sent them into Alpha Lab
- Monitored/sampled Distribution Tanks as needed.

# Maintenance Department

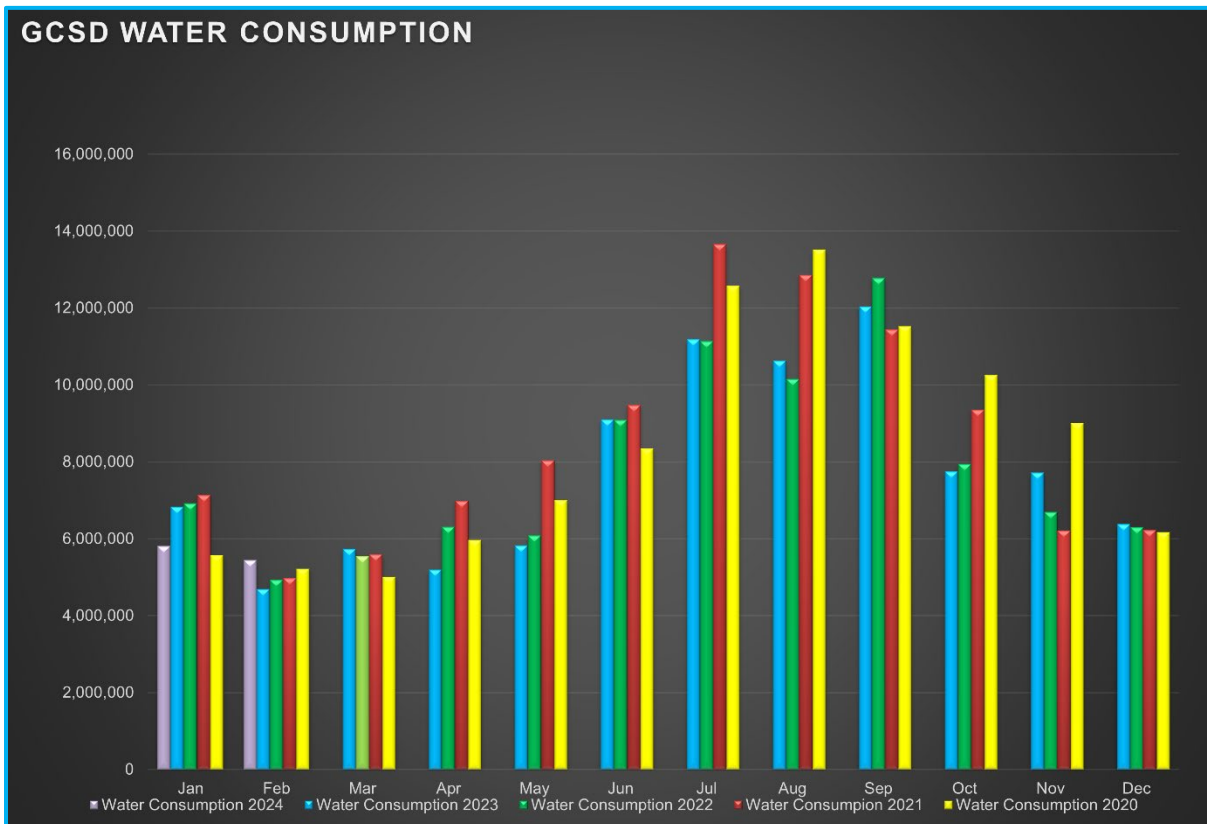
## Water Distribution System Division

Meter Related Services	Total
Check / Repair Meters	15
Water Meters Installed	2
Monthly Meter Restrictions	0
Meter Lock offs	5
Meter Changeouts	2
Tenant Final Reads	2
Re-Reads	29
Meter Turn-Offs	4
Meter Turn-Ons	9
Meter Tests	0
Winterize Meter	0
Color/Taste/Odor/PSI Complaints	1
<b>Total Meter Related Issues</b>	<b>69</b>

Billed Consumption (Gallons)	2024	2023	2022
Residential	5,125,570	4,334,123	4,687,122
Commercial	308,649	355,441	233,024
<b>Total</b>	<b>5,434,219</b>	<b>4,689,564</b>	<b>4,920,146</b>

<b>Active Accounts</b>	3273
------------------------	------

## Charted Historical Monthly Water Consumption



## Maintenance and Repair Data

Description	Total
Water Main Leaks / Repairs	0
Water Service Line Leaks / Repairs	1
Fire Hydrant Repairs / Replacements	0
Number of Hydrants Flushed	7
Number of Dead-Ends Flushed	11
Water Valves Exercised	4
GIS Points	0

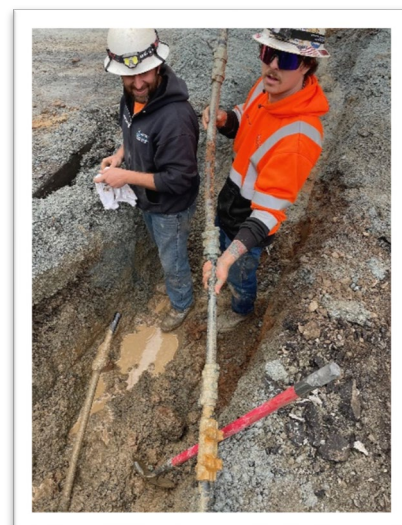
Description	Gallons
Flushing for Water Quality	42,600
Water Loss Due to Leaks / Breaks	6,500

After-Hours Calls (Hours)				
Water	Sewer	Park	Other	Total
8	16	0	2	26

## Maintenance and Repair

- **Routine Tasks**
  - Read all District Water Meters
  - Customer Service Calls (Low / High Pressures, No Water, Turn-Ons / Turn-Offs, Etc.)
  - Underground Service Alert (USA) Utility Marking Program
  - Weekly Pump Station Inspections at Tank 2, Tank 4, Tank 5 (Buildings, Tanks, Motors, Pumps, Drives, Communications, Generators, and Auxiliary Equipment)
  - Lock offs for non-payment.
  
- **Tanks and Pump Stations**
  
- **Distribution System**
  - Water service line replacement 20288 Pine Mountain Dr.
  - Meter washer replacement U6/L38.
  - Continue water service line survey to identify Lead and Copper water service lines.
  - Removed cross-connection at meter box at 18561 Harper Rd.

## Pictures



## Wastewater Collection System Division

Description	Total
Manholes Inspected	234
GIS Points	0
Customer Complaint	3
Odor Complaints	0

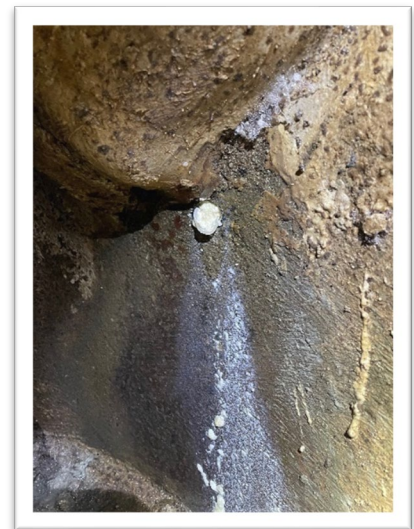
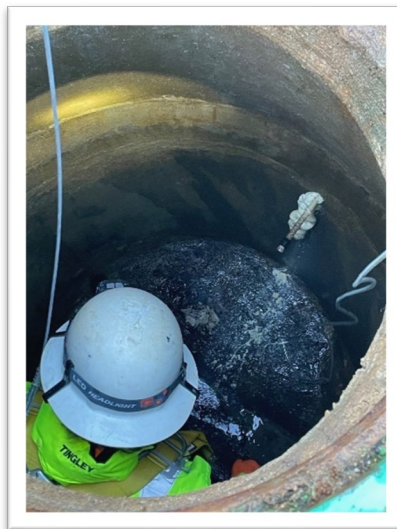
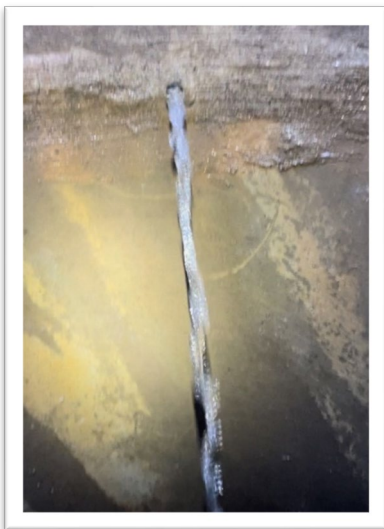
Description	Total
Flushing/Jetting (Feet)	255
Video Inspection (Feet)	270

Description	Total
Sanitary Sewer Spills (SSO)	0
SSO Gallons Spilled	0

## Maintenance and Repair

- **Routine Tasks**
  - Weekly lift station site inspections (PMCS)
  - Added degreaser and odor control to lift stations.
- **Lift Stations**
  - Cleaned and Inspected: LS13, LS14, LS15, LS16.
  - Manhole Inspections LS1.
  - Remove roots and debris found during manhole inspections.
  - Emergency vacuum truck deployment to LS 16 during storm event on 02/19/2024.
- **Collection System**
  - Flushed/Jetted gravity sewer line areas.
  - Groveland, Bass Pond, Twin Pines Easement monthly manhole inspections.
  - Installed SealGuard hydrophobic polyurethane grout in manholes with high infiltration.
  - Inflow and Infiltration inspection in Unit 12 and Big Oak Flat.

## Pictures



## General Maintenance Division

### Maintenance By Department

- **Operations Department**

- 2G Water Treatment Plant
- Big Creek Water Treatment Plant
- Butler Bypass Pump Station
- AWS
  - Jacked up and blocked booster trailer.
- STP
  - Repair broken contact arm and reset breaker on roto strainer.
  - Repair and reset motorized entry gate.
- Reservoir 2 – STP Pond
- Water Storage Tank 4
- Water Storage Tank 5
- LS6 – R&R Battery charger on generator

- **Maintenance Department**

- Equipment
  - Shop tool maintenance and cleaning.
  - Monthly inspect and run at operating temperatures...
    - Rain for Rent, Sullair, Vactron, Cement mixer, Light Tower, STP generator, Dunn Ct Generator, AWS Generator, Standby Generator, Highlands Generator.
- Vehicles
  - 41820: Adjust lift gate and reinstall backup camera.
  - 30821: R&R leaking ram and complete wear item overhaul.
  - 42334: Install toolbox.
  - 42128: Front windshield replacement.
  - 62333/12210: 90 Day Inspection.
  - 60523: 90 Day Inspection. R&R leaking dump valve.
  - 60524: 90 Day Inspection, Repaired EGR Flange, Cleaned engine compartment.
  - 70981: 90 Day Inspection, repair leaking air hose, R&R valve cover gasket.
  - 79987: 90 Day Inspection, Changed oil and filter, R&R Fuel Filters.
  - 79783: 90 Day Inspection.
- Buildings & Yard
  - General yard cleanliness.
  - Cleaned and reorganized the paint shed.
  - Vegetation management.

### Pictures

## Parks Division

### Maintenance and Repair

- **Mary Laveroni Community Park**
  - Landscape Maintenance.
- **Ballfield & Dog Park**
  - Completed repairs to fencing around gate.

### Contracted Work

- Crook Logging
  - Emergency tree removal at Mary Laveroni Lower Park
  - Vegetation mastication of Deer Flat Rd property

### Workplace Safety and Training

- Routine Safety Meetings
  - Daily Tailgate Meetings
  - Weekly Safety Meetings
  - Weekly Security Checks
  - Weekly Vehicle Inspection
- Du-All Safety Training
  - Emergency Action Plan (EAP), Wildfire Smoke, Fire Extinguisher, and Aerial Lift Truck Training.

