



BOARD MEETING AGENDA SUBMITTAL

TO: GCSB Board of Directors

FROM: Peter Kampa, General Manager

DATE: October 13, 2020

SUBJECT: Agenda Item 4C: Consideration of Initial Authorization for the Granting of an Additional Easement to PG&E for the PIH Project Under the Same Terms and Conditions as the Prior Project Easements

RECOMMENDED ACTION:

Staff recommends the following action:

I Move to Approve Initial Authorization for the Granting of an Additional Easement to PG&E for the PIH Project Under the Same Terms and Conditions as the Prior Project Easements

DISCUSSION:

PG&E has approached the District with a request for an additional easement at Mary Laveroni Park, see attached photo and site map. The District previously approved granting easements on the west end of the parking lot for the installation of the PIH facility, and as PG&E was working to prepare for construction, it was determined that locating the system connection point on District property was simpler and quicker to accomplish.

Approval at this time will allow PG&E to proceed with the surveying and creation of the agreement and easement deed for consideration by the Board in late October or early November.

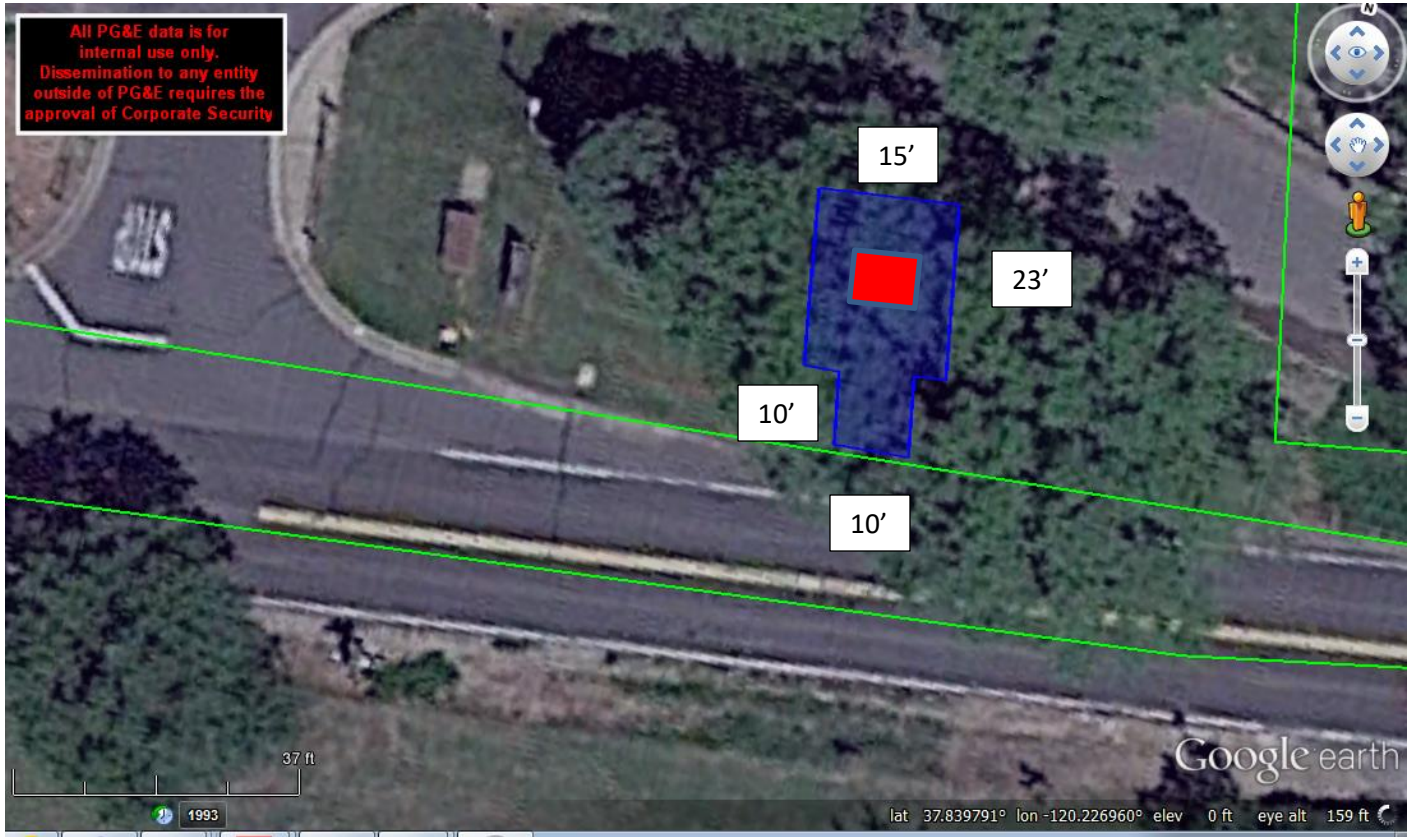
FISCAL IMPACT:


PG&E has applied the same land value of \$3 per square foot which they have rounded up to **\$1,500** for the 445 sq. ft. easement.

ATTACHMENTS:

1. PG&E map of proposed easement area

All PG&E data is for internal use only. Dissemination to any entity outside of PG&E requires the approval of Corporate Security



 Pad Mounted Interrupter is 7'-3" Wide x 6'-3" Deep x 6'-4" Tall

